

This article appeared in the
March 2004 issue of



Subscribe instantly at
www.bijonline.com

- Free in the U.S.
- \$18 per year in Canada and Mexico
- \$96 per year everywhere else

Fiorano Extends the Power of the ESB

Synthesizes Event-Driven Business Processes

The enterprise service bus (ESB) is a new variant of middleware that has evolved with the emergence of enterprise standards for service-oriented design, communication and security, creating a standards-based backbone for business integration. Fiorano has now extended the capabilities of the ESB yet further by providing the ability to synthesize and manage event-driven business processes.

Performance and Scalability

Fiorano has developed a powerful and flexible ESB that offers a distributed, brokered, peer-to-peer (P2P) architecture. While events flow directly between peers, the infrastructure employs a centralized server for monitoring and control of services across the distributed network. The P2P architecture enables parallel data flows to be created directly between components, leading to high performance and scalability. FioranoESB also offers self-healing application networks, with built-in support for load balancing and failover of servers as well as client applications without any additional programming effort.

Enterprise Interoperability

FioranoESB supports a large range of enterprise technologies, including:

- **Enterprise Standards:** Compatible with J2EE (supports application servers such as WebLogic, WebSphere, JBoss), .NET (integration using C# libraries), and Web services components.
- **Multiple languages:** Components can be developed using C, C++, Java, COM, .NET (C#), Visual Basic, Active X, and scripting languages.
- **Operating systems:** All JVM-compatible platforms are supported; e.g., Win32, Solaris, Linux, AS/400, OS/390, Macintosh.
- **Databases:** Includes support for MS-SQL, Oracle, Btrieve, Sybase, and DB2.

Business Process Synthesis

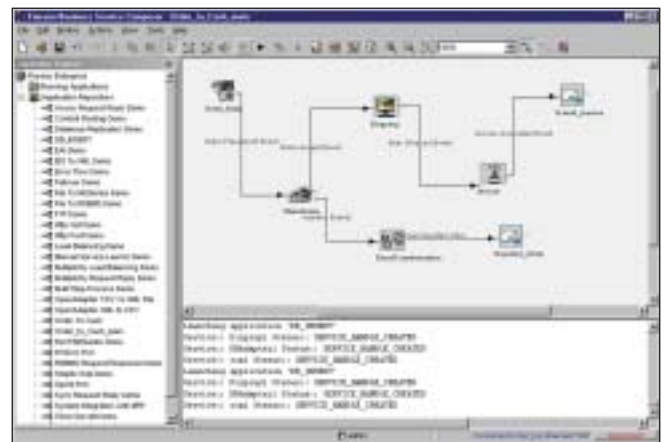
Arguably the most significant feature of FioranoESB is its business-component model. This allows the synthesis of event-enabled business processes that reflect the way a business operates rather than the way a programmer thinks. Business process management (BPM) solutions are typically request-based—modeled in a procedural manner that does not reflect the *event-driven* nature of real-world processes, which is how FioranoESB models and deploys processes.

Fiorano allows logical business components to be modeled at a much higher level of abstraction. Fiorano maps its logical business components to higher-level business components that lay above “lower-level” software components such as COM, EJB and other objects. This represents a fundamental shift away from procedural-based workflows and fully leverages the power, flexibility, and event-driven nature of the underlying ESB.

Key Advantages

FioranoESB's substantial benefits include:

- **Dynamic response:** The event-driven, service-oriented architecture enables controlled changes to business processes to be implemented directly, quickly and efficiently for business agility and integrity.



- **Reusability:** Fiorano provides tools that simplify the componentization and reuse of existing Web services, database applications, legacy, J2EE, and .NET software assets.
- **Lower TCO:** Incorporating dynamic versioning, deployment, and change management capabilities, FioranoESB reduces development and maintenance costs compared to traditional solutions. Comprehensive support for standards ensures accelerated learning and reduced training costs.
- **Enterprise scalability:** Fiorano's architecture offers a build-as-you-grow scalability, allowing incremental implementations, from projects at the departmental level to those that are enterprisewide.

Bottom Line

FioranoESB combines the power of a standards-based, service-oriented infrastructure architecture with easy-to-use tools for the deployment of distributed workflows across heterogeneous networks. Incorporating a business-component meta-model, the FioranoESB further extends the power of an ESB and enables the synthesis of event-enabled processes that reflect the way businesses operate.

Fiorano uniquely combines ESB, BPM and SOA approaches, creating a platform that is optimal toward solving the needs of integration scenarios that are mission-critical, business-process driven, and highly distributed. FioranoESB is unique in that it allows the synthesis of event-driven processes that reflect the way businesses operate.

FioranoESB is available from Fiorano Software, 718 University Avenue, Suite 212, Los Gatos, CA 95032. Voice: 408-354-3210; Website: www.fiorano.com. **bij**